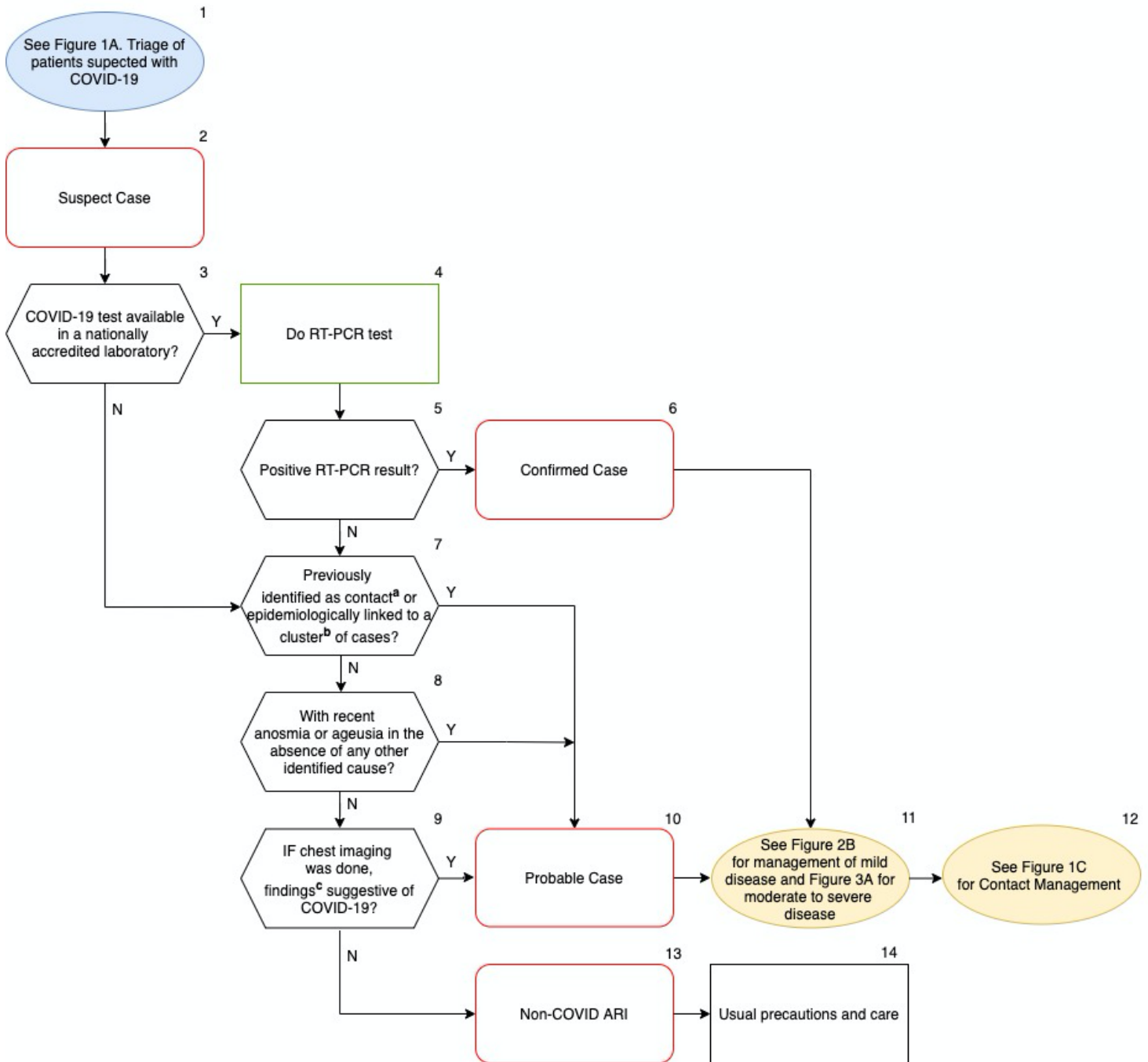


FIGURE 1B. RECOMMENDED WORK-UP OF SUSPECT CASES

NOVEMBER 7, 2020



FOOTNOTES

^a**Contact:** a person who has experienced any one of the following exposures to a probable/confirmed case during the 2 days before and the 14 days after the onset of said case:

1. Face-to-face contact within 1 metre and for at least 15 minutes
2. Direct physical contact;
3. Direct care without using recommended PPE; OR
4. Other situations as indicated by local risk assessments.

^bThe cluster should have at least one confirmed case.

^cTypical chest imaging findings of COVID-19:

1. Chest radiography - hazy opacities, often rounded in morphology, with peripheral and lower lung distribution;
2. Chest CT - multiple bilateral ground glass opacities, often rounded in morphology, with peripheral and lower lung distribution;
3. Lung ultrasound - thickened pleural lines, B lines, consolidative patterns with or without air bronchograms.