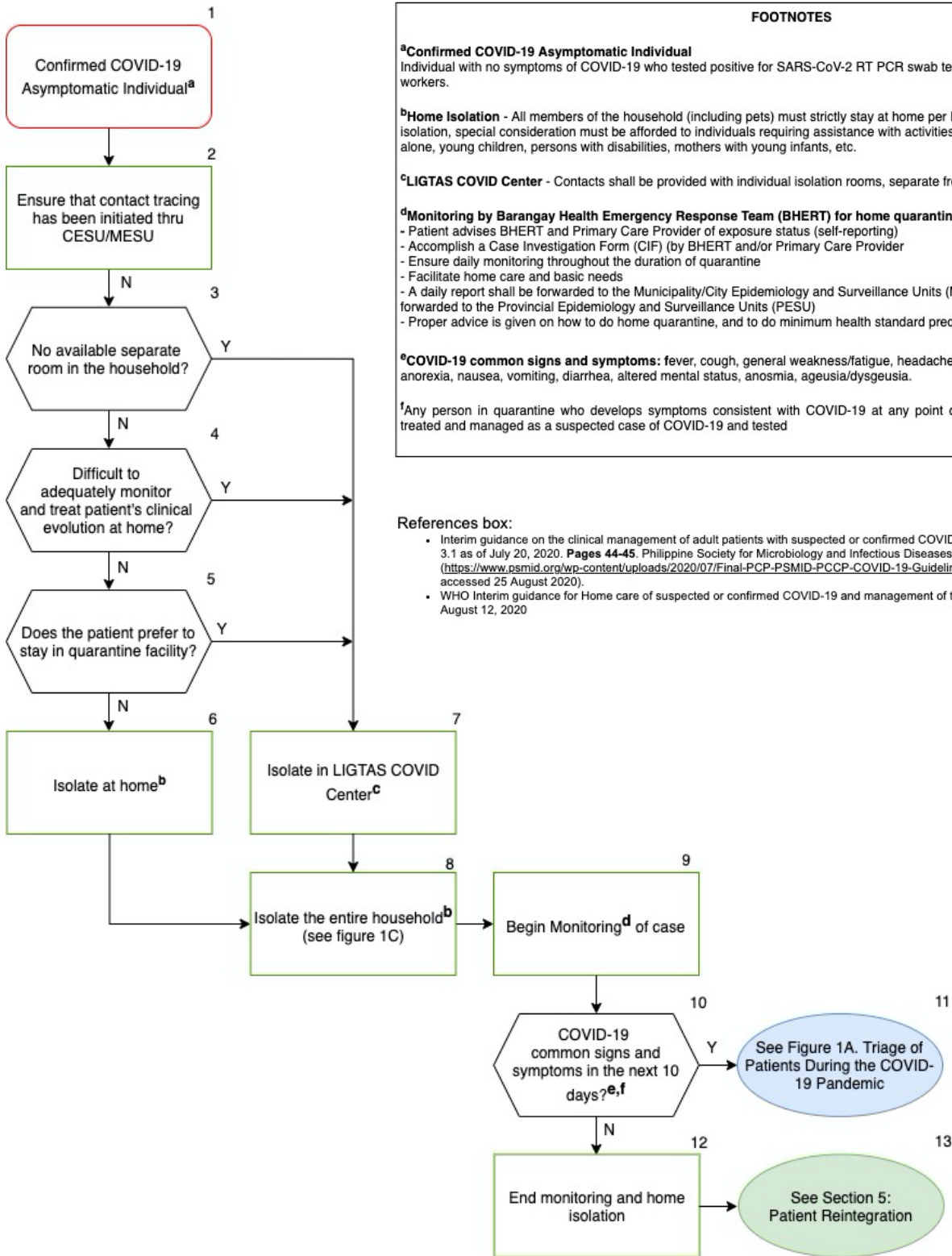


# FIGURE 2A. COMMUNITY-BASED MANAGEMENT OF ASYMPTOMATIC INDIVIDUALS WITH CONFIRMED COVID-19

NOVEMBER 7, 2020



## FOOTNOTES

### <sup>a</sup>Confirmed COVID-19 Asymptomatic Individual

Individual with no symptoms of COVID-19 who tested positive for SARS-CoV-2 RT PCR swab test. Examples of these are healthcare workers.

<sup>b</sup>Home Isolation - All members of the household (including pets) must strictly stay at home per LGU protocol. In community-based isolation, special consideration must be afforded to individuals requiring assistance with activities of daily living e.g. elderly living alone, young children, persons with disabilities, mothers with young infants, etc.

<sup>c</sup>LIGTAS COVID Center - Contacts shall be provided with individual isolation rooms, separate from those who are symptomatic

### <sup>d</sup>Monitoring by Barangay Health Emergency Response Team (BHERT) for home quarantine:

- Patient advises BHERT and Primary Care Provider of exposure status (self-reporting)
- Accomplish a Case Investigation Form (CIF) (by BHERT and/or Primary Care Provider)
- Ensure daily monitoring throughout the duration of quarantine
- Facilitate home care and basic needs
- A daily report shall be forwarded to the Municipality/City Epidemiology and Surveillance Units (MESU/CESU) which in turn are forwarded to the Provincial Epidemiology and Surveillance Units (PESU)
- Proper advice is given on how to do home quarantine, and to do minimum health standard precautions to the exposed patient

<sup>e</sup>COVID-19 common signs and symptoms: fever, cough, general weakness/fatigue, headache, myalgia, sore throat, coryza, dyspnea, anorexia, nausea, vomiting, diarrhea, altered mental status, anosmia, ageusia/dysgeusia.

<sup>f</sup>Any person in quarantine who develops symptoms consistent with COVID-19 at any point during the quarantine period should be treated and managed as a suspected case of COVID-19 and tested

### References box:

- Interim guidance on the clinical management of adult patients with suspected or confirmed COVID-19 infection, Version 3.1 as of July 20, 2020. **Pages 44-45**. Philippine Society for Microbiology and Infectious Diseases. (<https://www.psmid.org/wp-content/uploads/2020/07/Final-PCP-PSMID-PCCP-COVID-19-Guidelines-20July2020b.pdf> accessed 25 August 2020).
- WHO Interim guidance for Home care of suspected or confirmed COVID-19 and management of their contacts Version August 12, 2020