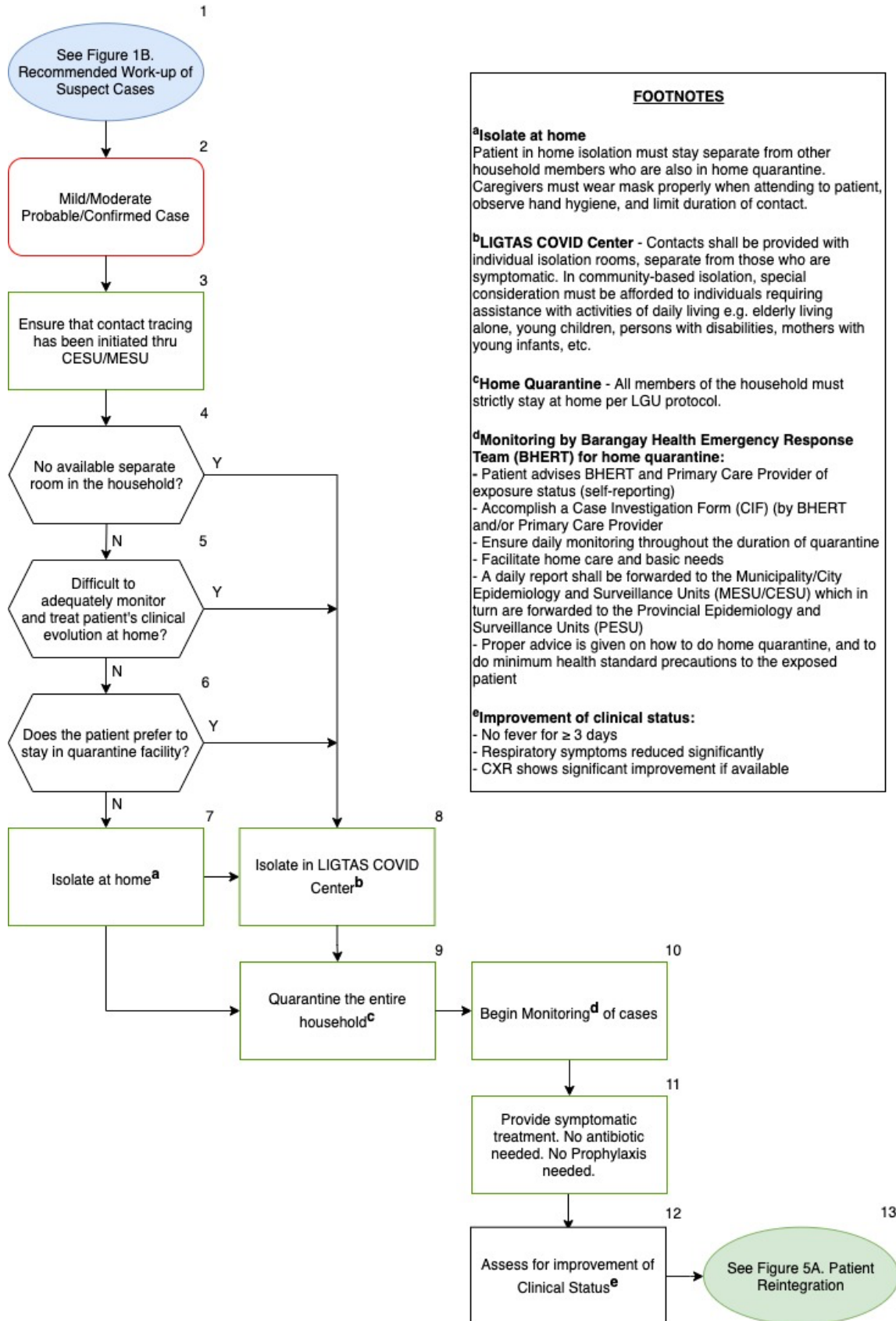


FIGURE 2B. MANAGEMENT OF MILD AND MODERATE CASES

NOVEMBER 7, 2020



FOOTNOTES

- ^aIsolate at home**
 Patient in home isolation must stay separate from other household members who are also in home quarantine. Caregivers must wear mask properly when attending to patient, observe hand hygiene, and limit duration of contact.
- ^bLIGTAS COVID Center** - Contacts shall be provided with individual isolation rooms, separate from those who are symptomatic. In community-based isolation, special consideration must be afforded to individuals requiring assistance with activities of daily living e.g. elderly living alone, young children, persons with disabilities, mothers with young infants, etc.
- ^cHome Quarantine** - All members of the household must strictly stay at home per LGU protocol.
- ^dMonitoring by Barangay Health Emergency Response Team (BHERT) for home quarantine:**
- Patient advises BHERT and Primary Care Provider of exposure status (self-reporting)
 - Accomplish a Case Investigation Form (CIF) (by BHERT and/or Primary Care Provider)
 - Ensure daily monitoring throughout the duration of quarantine
 - Facilitate home care and basic needs
 - A daily report shall be forwarded to the Municipality/City Epidemiology and Surveillance Units (MESU/CESU) which in turn are forwarded to the Provincial Epidemiology and Surveillance Units (PESU)
 - Proper advice is given on how to do home quarantine, and to do minimum health standard precautions to the exposed patient
- ^eImprovement of clinical status:**
- No fever for ≥ 3 days
 - Respiratory symptoms reduced significantly
 - CXR shows significant improvement if available