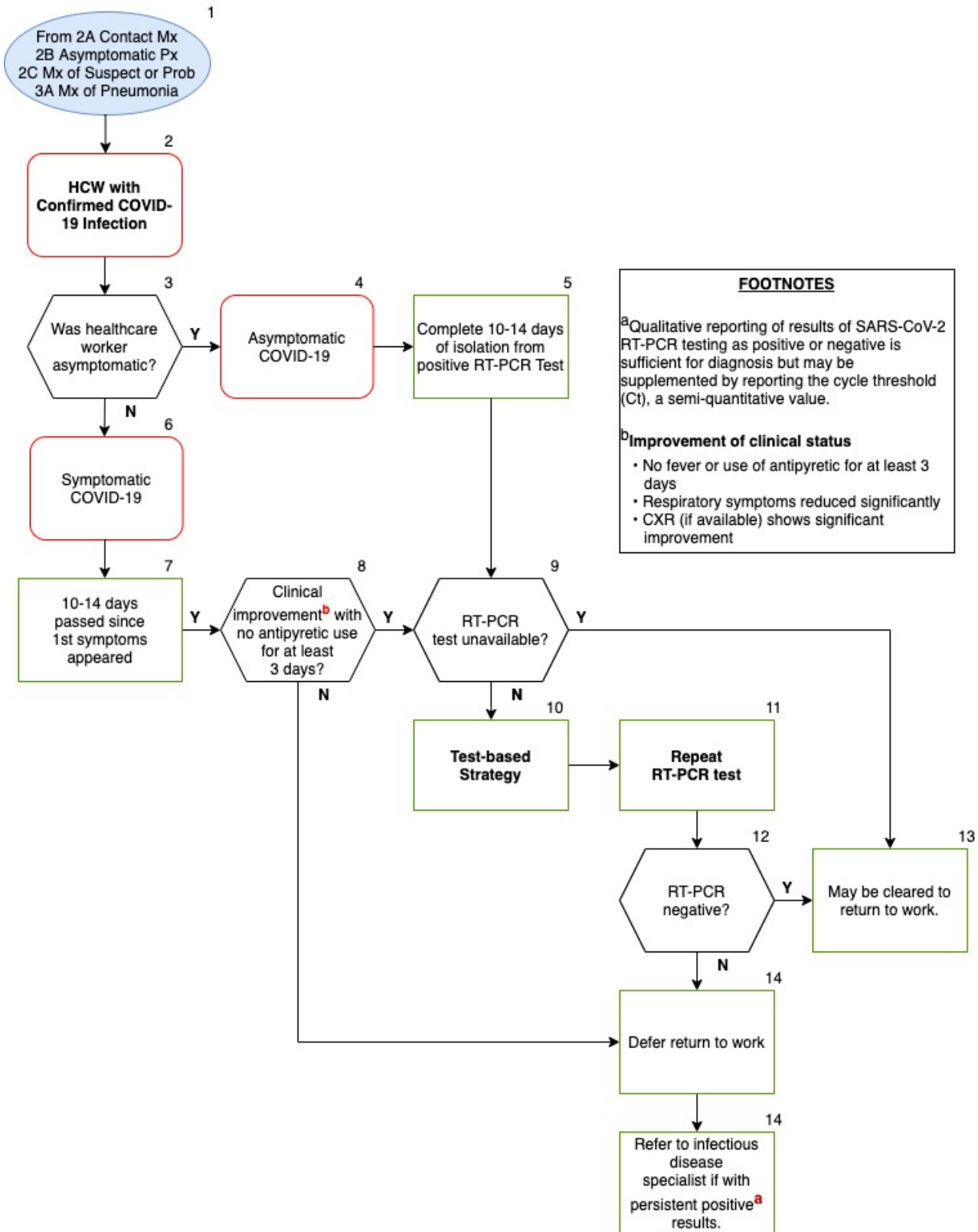


# FIGURE 5C. RECOMMENDATIONS FOR ASYMPTOMATIC AND SYMPTOMATIC HEALTH CARE WORKERS WITH CONFIRMED COVID-19 RETURNING TO WORK

NOVEMBER 7, 2020



**FOOTNOTES**

<sup>a</sup>Qualitative reporting of results of SARS-CoV-2 RT-PCR testing as positive or negative is sufficient for diagnosis but may be supplemented by reporting the cycle threshold (Ct), a semi-quantitative value.

<sup>b</sup>Improvement of clinical status

- No fever or use of antipyretic for at least 3 days
- Respiratory symptoms reduced significantly
- CXR (if available) shows significant improvement