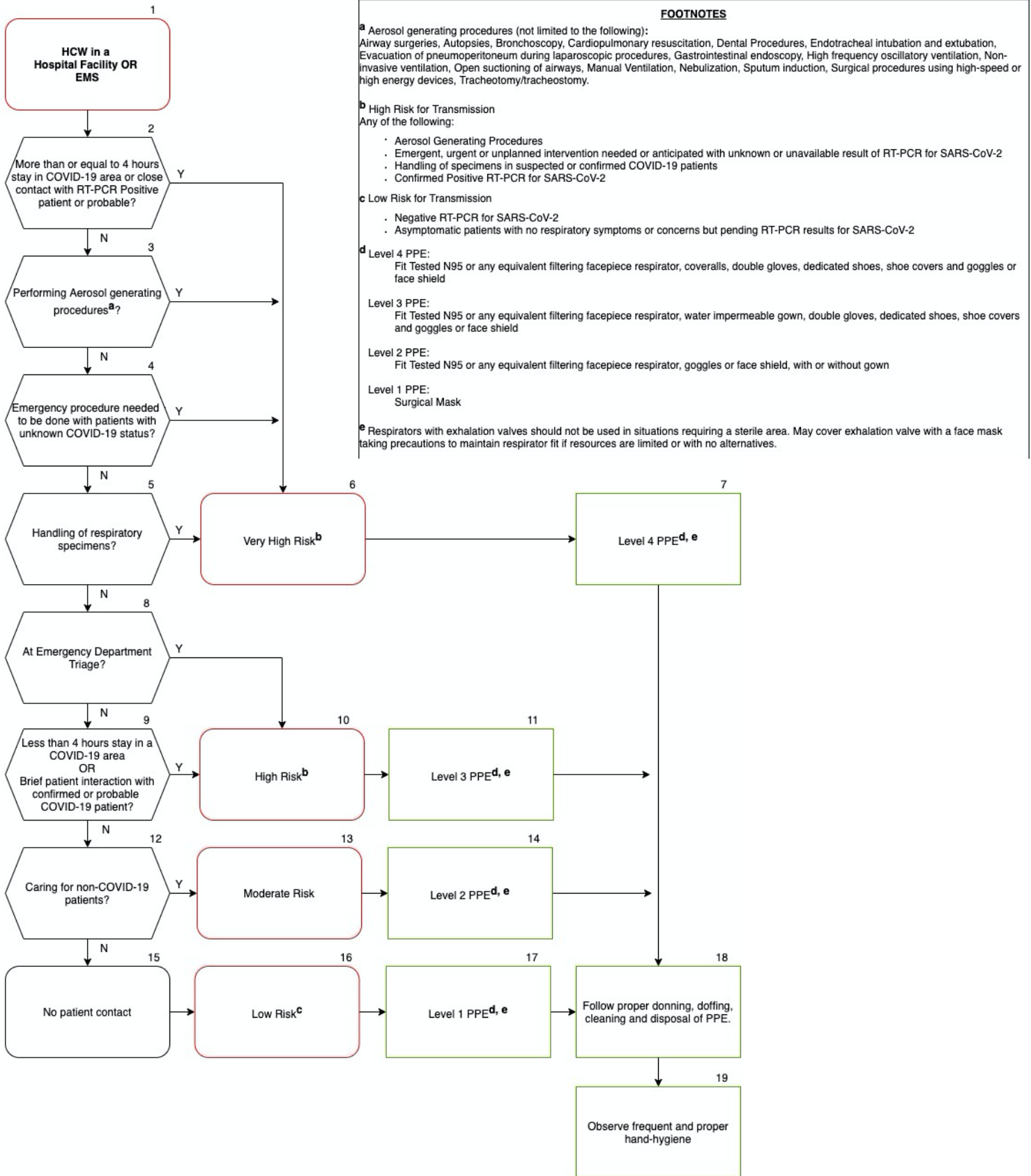


# FIGURE 6A. RECOMMENDED PPE FOR HEALTHCARE WORKERS IN HOSPITAL FACILITIES AND EMERGENCY MEDICAL SERVICES

NOVEMBER 7, 2020



**FOOTNOTES**

- <sup>a</sup> Aerosol generating procedures (not limited to the following):  
Airway surgeries, Autopsies, Bronchoscopy, Cardiopulmonary resuscitation, Dental Procedures, Endotracheal intubation and extubation, Evacuation of pneumoperitoneum during laparoscopic procedures, Gastrointestinal endoscopy, High frequency oscillatory ventilation, Non-invasive ventilation, Open suctioning of airways, Manual Ventilation, Nebulization, Sputum induction, Surgical procedures using high-speed or high energy devices, Tracheotomy/tracheostomy.
- <sup>b</sup> High Risk for Transmission  
Any of the following:
  - Aerosol Generating Procedures
  - Emergent, urgent or unplanned intervention needed or anticipated with unknown or unavailable result of RT-PCR for SARS-CoV-2
  - Handling of specimens in suspected or confirmed COVID-19 patients
  - Confirmed Positive RT-PCR for SARS-CoV-2
- <sup>c</sup> Low Risk for Transmission
  - Negative RT-PCR for SARS-CoV-2
  - Asymptomatic patients with no respiratory symptoms or concerns but pending RT-PCR results for SARS-CoV-2
- <sup>d</sup> Level 4 PPE:  
Fit Tested N95 or any equivalent filtering facepiece respirator, coveralls, double gloves, dedicated shoes, shoe covers and goggles or face shield
- Level 3 PPE:  
Fit Tested N95 or any equivalent filtering facepiece respirator, water impermeable gown, double gloves, dedicated shoes, shoe covers and goggles or face shield
- Level 2 PPE:  
Fit Tested N95 or any equivalent filtering facepiece respirator, goggles or face shield, with or without gown
- Level 1 PPE:  
Surgical Mask
- <sup>e</sup> Respirators with exhalation valves should not be used in situations requiring a sterile area. May cover exhalation valve with a face mask taking precautions to maintain respirator fit if resources are limited or with no alternatives.