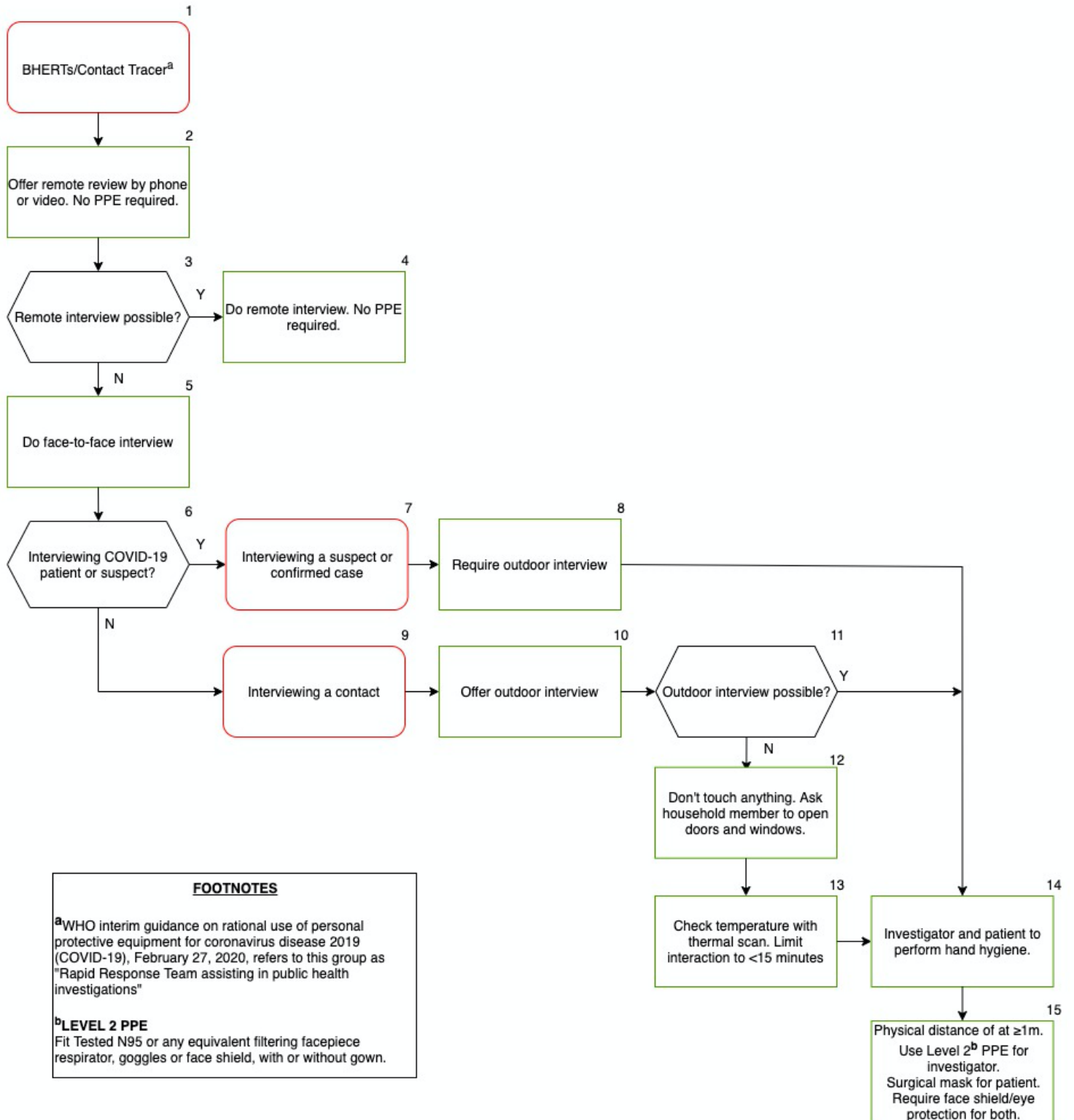


FIGURE 6D. PPE FOR BHERTS AND CONTACT TRACERS ASSISTING IN PUBLIC HEALTH INVESTIGATIONS

NOVEMBER 7, 2020



FOOTNOTES

^aWHO interim guidance on rational use of personal protective equipment for coronavirus disease 2019 (COVID-19), February 27, 2020, refers to this group as "Rapid Response Team assisting in public health investigations"

^bLEVEL 2 PPE
Fit Tested N95 or any equivalent filtering facepiece respirator, goggles or face shield, with or without gown.