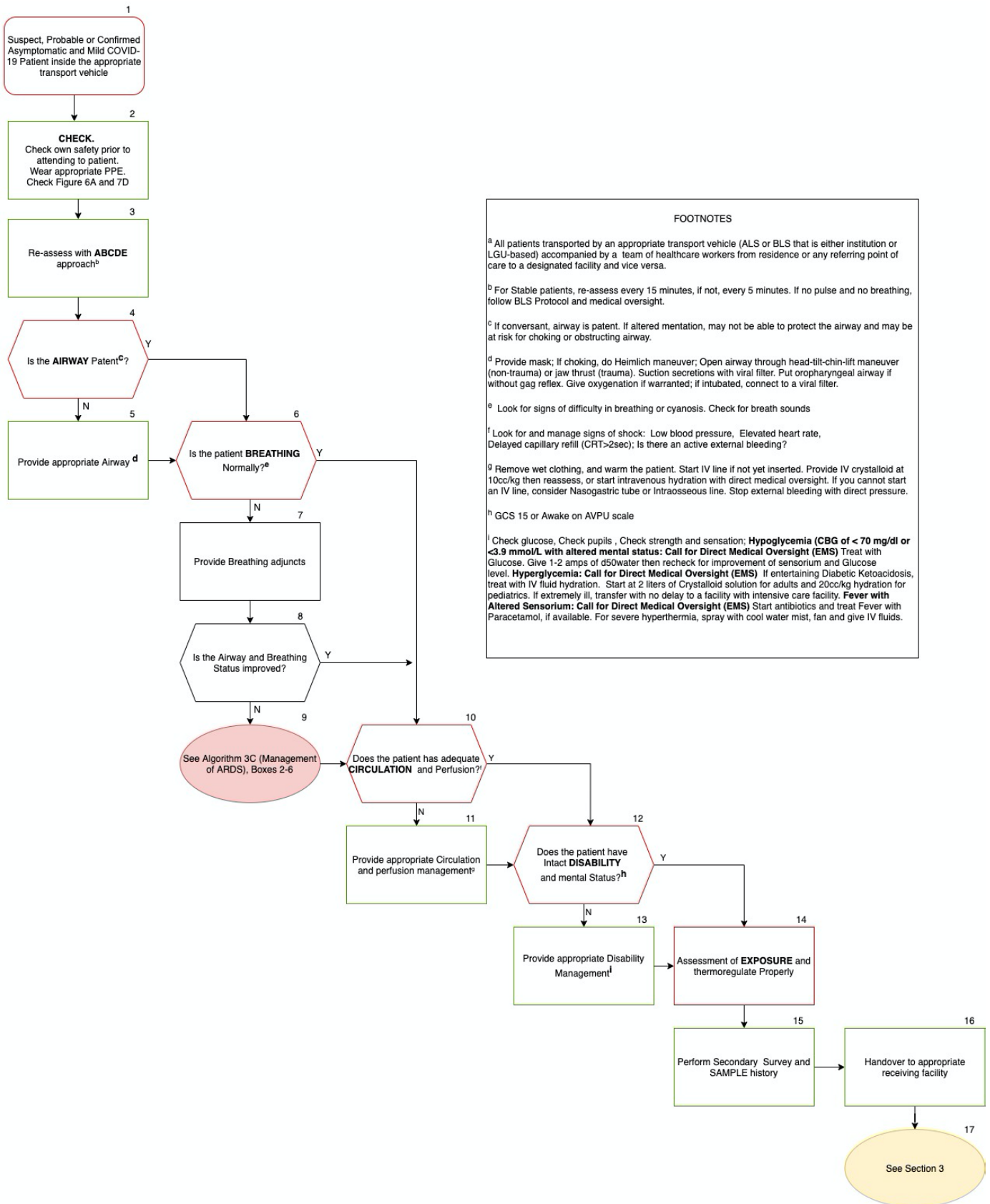


# FIGURE 7D. MANAGEMENT FOR SUSPECT, PROBABLE, OR CONFIRMED COVID-19 PATIENT IN TRANSIT<sup>a</sup>

NOVEMBER 7, 2020



### FOOTNOTES

- <sup>a</sup> All patients transported by an appropriate transport vehicle (ALS or BLS that is either institution or LGU-based) accompanied by a team of healthcare workers from residence or any referring point of care to a designated facility and vice versa.
- <sup>b</sup> For Stable patients, re-assess every 15 minutes, if not, every 5 minutes. If no pulse and no breathing, follow BLS Protocol and medical oversight.
- <sup>c</sup> If conversant, airway is patent. If altered mentation, may not be able to protect the airway and may be at risk for choking or obstructing airway.
- <sup>d</sup> Provide mask; If choking, do Heimlich maneuver; Open airway through head-tilt-chin-lift maneuver (non-trauma) or jaw thrust (trauma). Suction secretions with viral filter. Put oropharyngeal airway if without gag reflex. Give oxygenation if warranted; if intubated, connect to a viral filter.
- <sup>e</sup> Look for signs of difficulty in breathing or cyanosis. Check for breath sounds
- <sup>f</sup> Look for and manage signs of shock: Low blood pressure, Elevated heart rate, Delayed capillary refill (CRT>2sec); Is there an active external bleeding?
- <sup>g</sup> Remove wet clothing, and warm the patient. Start IV line if not yet inserted. Provide IV crystalloid at 10cc/kg then reassess, or start intravenous hydration with direct medical oversight. If you cannot start an IV line, consider Nasogastric tube or Intraosseous line. Stop external bleeding with direct pressure.
- <sup>h</sup> GCS 15 or Awake on AVPU scale
- <sup>i</sup> Check glucose, Check pupils, Check strength and sensation; **Hypoglycemia (CBG of < 70 mg/dl or < 3.9 mmol/L with altered mental status; Call for Direct Medical Oversight (EMS) Treat with Glucose. Give 1-2 amps of d50water then recheck for improvement of sensorium and Glucose level. Hyperglycemia: Call for Direct Medical Oversight (EMS) If entertaining Diabetic Ketoacidosis, treat with IV fluid hydration. Start at 2 liters of Crystalloid solution for adults and 20cc/kg hydration for pediatrics. If extremely ill, transfer with no delay to a facility with intensive care facility. Fever with Altered Sensorium: Call for Direct Medical Oversight (EMS) Start antibiotics and treat Fever with Paracetamol, if available. For severe hyperthermia, spray with cool water mist, fan and give IV fluids.**